

Cognitive ability changes and dynamics of cortical thickness development in healthy children and adolescents



Miguel Burgaleta^{a,b}, Wendy Johnson^c, Deborah P. Waber^{d,1}, Roberto Colom^{a,e}, Sherif Karama^{f,g,*}

^a Universidad Autónoma de Madrid, Spain

^b Universitat Pompeu Fabra, Spain

^c The University of Edinburgh, UK

^d Boston Children's Hospital, Harvard University, USA

^e Fundacion CIEN/Fundacion Reina Sofia

^f Montreal Neurological Institute, McGill University, Canada

^g Douglas Mental Health University Institute, Canada

ARTICLE INFO

Article history:

Accepted 15 September 2013

Available online 23 September 2013

Keywords:

Intelligence

IQ

Brain development

Brain plasticity

Cortical thickness

Verbal IQ

Performance IQ

ABSTRACT

Intelligence quotient (IQ) scores tend to remain stable across the lifespan. Nevertheless, in some healthy individuals, significant decreases or increases in IQ have been observed over time. It is unclear whether such changes reflect true functional change or merely measurement error. Here, we applied surface-based corticometry to investigate vertex-wise cortical surface area and thickness correlates of changes in Full Scale IQ (FSIQ), Performance IQ (PIQ) and Verbal IQ (VIQ) in a representative sample of children and adolescents ($n = 188$, mean age = 11.59 years) assessed two years apart as part of the NIH Study of Normal Brain Development. No significant associations between changes in IQ measures and changes in cortical surface area were observed, whereas changes in FSIQ, PIQ, and VIQ were related to rates of cortical thinning, mainly in left frontal areas. Participants who showed reliable gains in FSIQ showed no significant changes in cortical thickness on average, whereas those who exhibited no significant FSIQ change showed moderate declines in cortical thickness. Importantly, individuals who showed large decreases in FSIQ displayed the steepest and most significant reductions in cortical thickness. Results support the view that there can be meaningful cognitive ability changes that impact IQ within relatively short developmental periods and show that such changes are associated with the dynamics of cortical thickness development.

© 2013 Elsevier Inc. All rights reserved.

Introduction

Intelligence quotient (IQ) is one of the most relevant human psychological characteristics, as highlighted by epidemiologic studies that document long-term predictive relationships between early cognitive ability and adult physical and mental health outcomes, including longevity (Jokela et al., 2009; Whalley and Deary, 2001). Brain imaging research has shown that general cognitive ability is also associated with several features of the human brain, such as gray matter morphology (Burgaleta et al., 2013; Colom et al., 2009; Gläscher et al., 2010; Haier et al., 2009; Karama et al., 2009, 2011), trajectories of cortical development (Shaw et al., 2006), functional efficiency (Haier et al., 1988; Neubauer and Fink, 2009; van den Heuvel et al., 2009), and integrity

of white matter connections (Chiang et al., 2009; Tamnes et al., 2010; Yu et al., 2008).

Contrary to other cognitive measures, IQ is an index of relative general performance, as it summarizes how well an individual performs in a cognitive battery with respect to a reference group of same-age peers. Therefore, although an individual's absolute level of performance will strongly vary across development (McArdle et al., 2002), IQ scores, which are age-adjusted, will tend to remain relatively stable (Deary et al., 2000). In keeping with this, in the current manuscript, the terms 'cognitive ability' and 'general cognitive ability' should be understood as referring to age-standardized rather than absolute measures of cognitive performance. Thus change scores, even absolute difference scores, indicate relative rather than absolute change.

Empirical data confirms that IQ is highly stable developmentally; for instance, Deary et al. (2000) reported a mean test–retest correlation between ages 11 and 77 of $r = .73$. However, although high, such a correlation nonetheless allows for occurrence of increases and decreases, sometimes significant in magnitude. Along these lines, a recent report from the NIH Study of Normal Brain Development (Waber et al., 2012) revealed that although the test–retest correlation for Full Scale

* Corresponding author at: McConnell Brain Imaging Center, Montreal Neurological Institute, McGill University, 3801 University, WB208, Montreal, QC H3A 2B4, Canada. Fax: +514 888 4460.

E-mail address: sherif.karama@mcgill.ca (S. Karama).

¹ For the Brain Development Cooperative Group (http://www.brain-child.org/brain_group.html).

IQ (FSIQ) was high across a 2-year interval ($r = 0.81$), 25% of these healthy children and adolescents showed changes of 9 points or more (nearly 2/3 standard deviation) across this interval.

Such fluctuations, which are not well understood, have often been ascribed to measurement error (Flynn, 2007), which some most certainly are. However, in keeping with recent evidence about brain plasticity and higher-order cognition (Draganski et al., 2004; Haier et al., 2009; Lövdén et al., 2010; Mackey et al., 2012; Takeuchi et al., 2010), some of these fluctuations could also represent true changes in cognitive abilities. Documentation of association between IQ changes and morphometric variations in neural structure would strongly support such a view. In this vein, Ramsden et al. (2011) studied 33 adolescents using voxel-based morphometry and found changes in two aspects of FSIQ, Verbal and Performance IQ (VIQ; PIQ), to be associated with changes in regional gray matter in sensorimotor areas. While these findings strongly suggest that IQ changes can indeed be genuine, generalization is somewhat limited by small sample size, use of different IQ tests at different ages, and sample peculiarities (e.g., about half appeared to meet criteria for dyslexia).

Here, we investigated the structural correlates of longitudinal changes in IQ in participants of the NIH MRI Study of Normal Brain Development. Individuals included in the present study ($N = 188$) contributed structural MRIs and concurrent IQ testing with the Wechsler Abbreviated Scale of Intelligence (WASI) at a 2-year interval. To better characterize structural changes in gray matter, corticometric methods were applied to generate two independent indices of cortical morphology: cortical thickness (CTh) and cortical surface area (CSA). Each of these metrics is known to reflect different components of cortical structure. Cortical surface area is related to the number and spacing of minicolumnar units of cells whereas cortical thickness is thought to index the number of neurons per column as well as glial support and dendritic arborization (Chklovskii et al., 2004; la Fougere et al., 2011; Rakic, 1988; Thompson et al., 2007). Changes in IQ were regressed against maps of changes in cortical thickness and surface area.

Given previous findings (Ramsden et al., 2011), we hypothesized that changes in VIQ would be positively related to gray matter structural changes in sensorimotor areas. Furthermore, because of our larger sample and hence greater statistical power, we hypothesized that we would observe additional associations with VIQ and PIQ, as well as with FSIQ. We anticipated such associations in parieto-frontal areas previously shown to be involved with individual differences in cognitive ability (Jung and Haier, 2007).

Materials and methods

Sample

Data were obtained from the Pediatric MRI Data Repository (Objective 1) created for the National Institute of Mental Health MRI Study of Normal Brain Development (Evans and Brain Development Cooperative Group, 2006), a multi-site longitudinal project aimed at providing a normative database to characterize healthy brain maturation in relation to behavior; 431 subjects underwent cognitive evaluation and MRI acquisition, distributed in six different sites (a listing of the participating sites and of the study investigators can be found at: http://www.bic.mni.mcgill.ca/nihpd/info/participating_centers.html). The sample was

demographically representative of the normative US population based on age, gender, ethnicity, and socioeconomic status (Waber et al., 2007). Participants with prior history of psychiatric disorders, neurological, or other medical illnesses with central nervous system implications were excluded. Some of the participants (24%) underwent one single MRI session; 39% were scanned twice; and 37% were scanned three times. Data for visit 3 were excluded for those participants with more than two time points in order to build a simple pre-post design. Participants with only one MRI scan, missing IQ scores or failing processed MRI quality control at one or more time points were excluded. Further visual quality control (blinded to cognitive ability scores) of the native cortical surfaces detected obvious problems in a total of 36 scans (e.g., frontal lobe truncation due to failed automatic brain masking, fused gyri or clearly aberrant cortical thickness values due to ringing artifacts), that were also excluded of the analyses. The final sample analyzed retained a total of 188 subjects (mean age \pm SD at the time 1: 11.59 years \pm 3.46; range 6.01 to 20.01 years; 59% of participants were females; and the mean inter-scan lapse was 1.96 years. See Table 1 for further characteristics of the sample used).

Cognitive measures

The Wechsler Abbreviated Scale of Intelligence (WASI) was used for all subjects (Wechsler, 1999). The WASI includes the Vocabulary, Similarities, Matrix Reasoning, and Block Design subtests. FSIQ as well as VIQ and PIQ scores were obtained for each participant at each visit. See Table 1 for a summary of these data.

MRI acquisition protocol

A 3D T1-weighted Spoiled Gradient Recalled (SPGR) echo sequence from 1.5 Tesla scanners was acquired for each participant at each visit, with 1 mm isotropic data acquired sagittally (whole head); TR = 22–25 ms, TE = 10–11 ms. Excitation pulse = 30°, refocusing pulse = 180°. FOV = AP 256 mm, LR 160–180 mm. Matrix size = AP 256 mm, LR for 1 mm isotropic. Slice thickness of ~1.5 mm for GE scanners (with a limit of 124 slices) was allowed to guarantee whole head coverage.

MRI processing

MRI images were processed by applying a fully automated in-house pipeline, CIVET 1.1.9 (Ad-Dab'bagh et al., 2006; Kim et al., 2005; MacDonald et al., 2000) for the measurement of regional cortical thickness. CIVET was developed at the Montreal Neurological Institute and comprises several steps, extensively detailed elsewhere (Karama et al., 2009): linear registration of native T1 images to the ICBM152 template (Mazziotta et al., 1995); non-uniformity correction; tissue classification into gray matter, white matter cerebrospinal fluid and background; pial and white matter surface fitting (40962 vertices per hemisphere); non-linear surface registration to a high-resolution surface template in ICBM152 space; inverse registration of the surfaces into native space; cortical thickness calculation at each vertex with the t-link metric (Lerch and Evans, 2005); cortical thickness smoothing applying a 20 mm FWHM surface-based smoothing kernel; surface area calculation at each vertex as one third of the total area of all triangular facets

Table 1

Descriptive statistics. FSIQ = Full scale IQ, VIQ = Verbal IQ, PIQ = Performance IQ, CTh = cortical thickness, CSA = cortical surface area. Change = Time 2 – Time 1. All correlations are significant at $p < 0.01$.

| | Age | FSIQ | VIQ | PIQ | Mean CTh | Mean CSA | |
|--------------------------|--------------------|--------------------------|------------------------|------------------------|------------------------|--------------------------|------------------------|
| Time 1 | Mean (SD) min, max | 11.59 (3.46) 6.09, 20.05 | 112.04 (12.94) 78, 160 | 111.12 (13.82) 74, 156 | 110.29 (13.04) 72, 157 | 3.59 (0.17) 3.18, 3.99 | 2.29 (0.18) 1.82, 2.74 |
| Time 2 | Mean (SD) min, max | 13.55 (3.49) 7.74, 21.87 | 113.12 (12.62) 75, 150 | 111.27 (13.09) 80, 147 | 112.12 (12.94) 74, 147 | 3.55 (0.17) 3.06, 3.97 | 2.29 (0.19) 1.78, 2.73 |
| Longitudinal correlation | – | 0.83 | 0.74 | 0.80 | 0.86 | 0.98 | |
| Change | Mean (SD) min, max | 1.96 (0.42) 0.85, 3.81 | 1.07 (7.51) –18, 24 | 0.15 (9.62) –29, 30 | 1.82 (8.46) –25, 24 | –0.04 (0.09) –0.28, 0.25 | 0 (0.04) –0.09, 0.13 |

adjoining it; and surface area smoothing using a 40 mm FWHM surface-based smoothing kernel (Lyttelton et al., 2009).

Longitudinal design and statistical analyses

We computed IQ difference scores (time 2 minus time 1; Δ IQ), as well as individual maps of cortical changes (time 2 minus time 1; Δ CTh or Δ CSA depending on the variable under study). Vertex-wise analyses were carried out via permutation-based inference (Nichols and Holmes, 2002), implemented using the *randomise* tool of the FSL package (FMRIB, Oxford, UK; <http://fsl.fmrib.ox.ac.uk/fsl/fslwiki/Randomise>). For this purpose, the surface data were projected onto an ICBM152 2 mm template by means of the appropriate function of the SurfStat Toolbox (<http://www.math.mcgill.ca/keith/surfstat/>), so that each vertex value was assigned to its nearest voxel while respecting the standard space of reference. Five thousand permutations were performed for each analysis. The association between Δ IQ and Δ CTh or Δ CSA was analyzed at each vertex, controlling for the effects of age at time 1, gender, scanner, IQ at time 1, and inter-scan lapse and mean CTh (when looking at CTh changes) or total CSA (when looking at CSA changes) at time 1. Controlling for mean CTh or total CSA effects allowed improved sensitivity to detect local areas of significance unrelated to potential overall cortical effects. More specifically, the fitted regression equation at each vertex was:

$$\Delta\text{CTh} \sim b_0 + b_1\text{Age}_{T1} + b_2\text{Gender} + b_3\text{Scanner} + b_4\text{MeanCTh}_{T1} + b_5\text{IQ}_{T1} + b_6\text{TimeLapse} + b_7\Delta\text{IQ} + \varepsilon,$$

where Age_{T1} is age in years at time 1, MeanCTh_{T1} is mean cortical thickness at time 1, IQ_{T1} is IQ at time 1, and TimeLapse is the exact interval between time 1 and time 2 in years. An equivalent regression equation was fitted for Δ CSA.

Regression coefficients for changes in CTh or CSA were estimated for changes in FSIQ, PIQ, or VIQ, depending on the focus of analysis. Corollary *t*-statistic maps were produced at each vertex of the cortical surface. Threshold-Free Cluster Enhancement (Smith and Nichols, 2009) was applied to detect cluster-wise statistical signal while avoiding the setting of arbitrary cluster-forming thresholds. Finally, statistical maps were thresholded at $p < 0.05$ corrected for multiple comparisons (family-wise error rate below 5%).

Results

Descriptive statistics for the main variables of interest are shown in Table 1. Mean IQs for the sample were substantially above the population norm of 100 at both time points, and standard deviations were slightly smaller than the norm of 15. Fig. 1 displays the individual trajectories of change for FSIQ, VIQ and PIQ. According to the published 90% confidence intervals (Wechsler, 1999), 51.6% of the subjects showed clear changes in FSIQ, 46.3% in VIQ, and 44.2% in PIQ. There were no significant correlations between change scores in FSIQ/VIQ/PIQ and age, mean CTh or mean CSA at either time point. There were also no significant gender differences. However, change in FSIQ correlated with initial FSIQ ($r = -.33$, $p < .01$) as well as with subsequent FSIQ ($r = .25$, $p < .01$). Similar patterns were found for VIQ (initial: $r = -.43$, $p < .01$; subsequent: $r = .29$, $p < .01$) and PIQ (initial: $r = -.33$, $p < .01$; subsequent: $r = .31$, $p < .01$). These patterns show the expected regressions to the mean.

In keeping with previously reported findings on this dataset (Brain Development Cooperative Group, 2012; Nguyen et al., 2013), only first-order linear (i.e. no quadratic or cubic effects) cortical thinning effects of age were found across most of the cortex (Fig. 2) and no significant increases in CTh were detected. On the other hand, decreases in CSA (also exclusively of a first-order linear type) were found only in the right occipital pole and right superior temporal gyrus, whereas

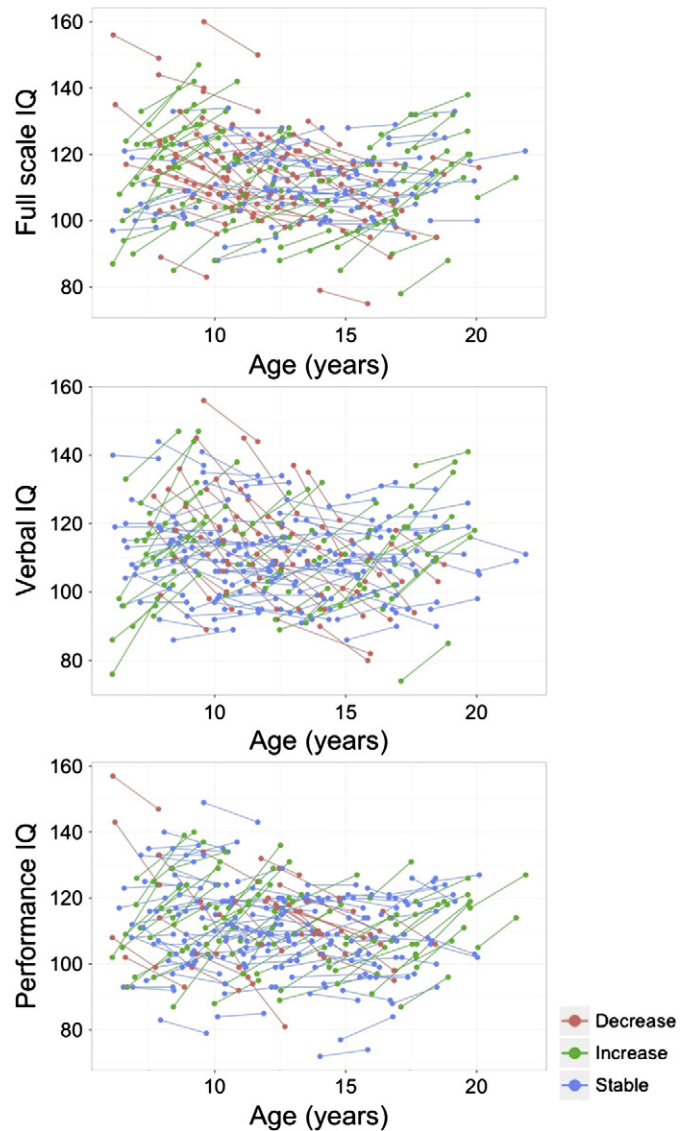


Fig. 1. Longitudinal plots for the intra-individual changes in IQ (full-scale, verbal and performance) and cortical thickness between time 1 and time 2. Participants are color-coded based on the magnitude and direction of their change in FSIQ scores (90% confidence interval).

increases were detected bilaterally in the anterior cingulate cortex (Fig. 3).

Importantly, changes in FSIQ scores were significantly related ($FWE < 0.05$) to changes in CTh (ΔCTh) in regions of the left hemisphere that included the sensorimotor cortex (left pre- and post-central gyri) as well as the superior, middle, and inferior frontal gyri, and pars opercularis and triangularis regions (Fig. 4A). Correlations ranged from 0.11 to 0.33 within the significant region detected by the TFCE algorithm, with the local maximum of significance found in the left inferior pre-central gyrus (changes for CTh at the peak vertex are also shown in Fig. 5). No significant associations between changes in CSA and changes in FSIQ were found. When inspecting the maximum and minimum values for FSIQ, PIQ and VIQ at both time points, we identified two subjects with particularly high scores at time 1 (z score > 3 ; see longitudinal plots in Fig. 1). We repeated our analyses after excluding those subjects and obtained essentially identical results to those shown in Fig. 4. Finally, we also repeated our analyses for CTh after applying a FWHM smoothing kernel of 40 mm, equaling the one applied to CSA. Again, this modification had very little impact on our results and had no repercussions on our conclusions.

Decrease in CT

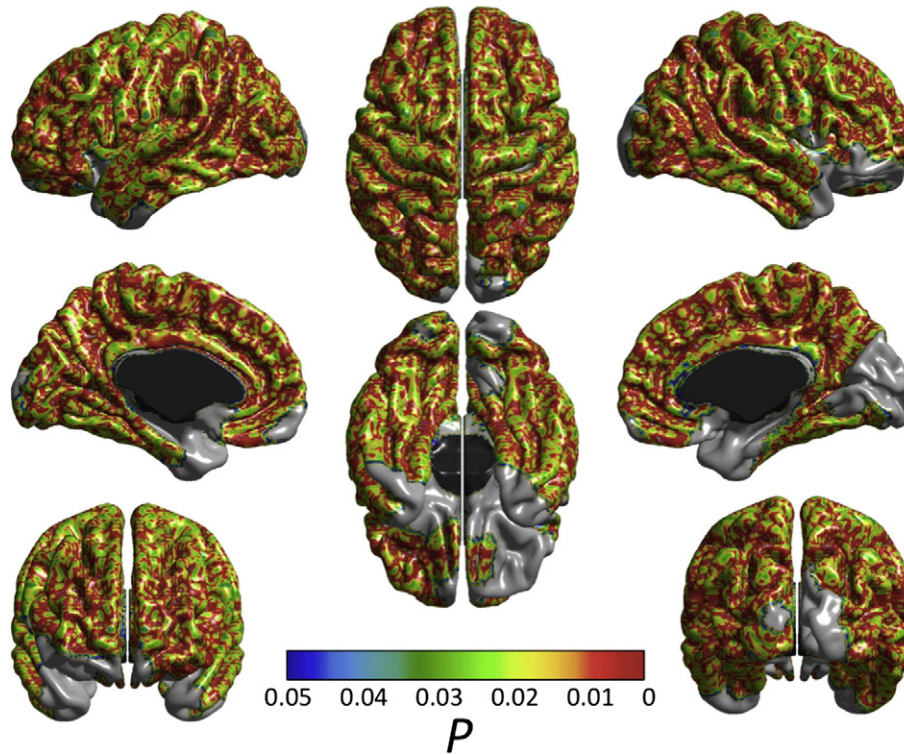


Fig. 2. Significant (FWE-corrected $p < 0.05$) age effect on cortical thickness. Only first order linear cortical thinning age effects were observed. Effects of age at time 1, sex, scanner and inter-scan lapse were controlled.

To illustrate the main IQ results, participants were partitioned into three groups according to their Δ_{FSIQ} scores. As did Ramsden et al. (2011), we used the 90% CI to ensure that FSIQ changes were not due to measurement error. Further, because difference scores can be to some extent unreliable, using the confidence intervals allowed us to study brain changes for those participants showing reliable IQ increases, reliable IQ decreases, and no reliable IQ changes. Thus, groups were defined as follows: 'increase' (FSIQ at time 2 \geq upper endpoint of the FSIQ 90% confidence interval; $N = 58$), 'stable' (FSIQ at time 2 within the FSIQ 90% CI; $N = 92$), and 'decrease' (FSIQ at time 2 \leq 90% CI lower endpoint; $N = 38$). At the peak vertex for the association between FSIQ change and CTh change, the 'increase' group showed non-significant cortical thickening ($t = 0.658$, $p = 0.513$), whereas the 'decrease' group displayed the steepest rates of reduction in CTh ($t = -4.827$, $p = 0.00001$; Fig. 4C). Subjects in the 'stable' group showed milder decreases in cortical thickness ($t = -2.578$, $p = 0.012$) (Fig. 4C).

Finally, changes in PIQ were associated (FWE < 0.05) with changes in CTh in the left pre-central and inferior frontal gyri (as found for FSIQ), in regions of the right posterior superior frontal cortex including the superior precentral gyrus as well as in the right paracingulate/medial superior frontal gyrus including the supplementary motor area. For VIQ, only a trend association was observed (FWE < 0.1) in a small region located in the inferior precentral gyrus (Fig. 6). This was in very close vicinity to the peak region where associations with FSIQ and PIQ changes were observed.

Discussion

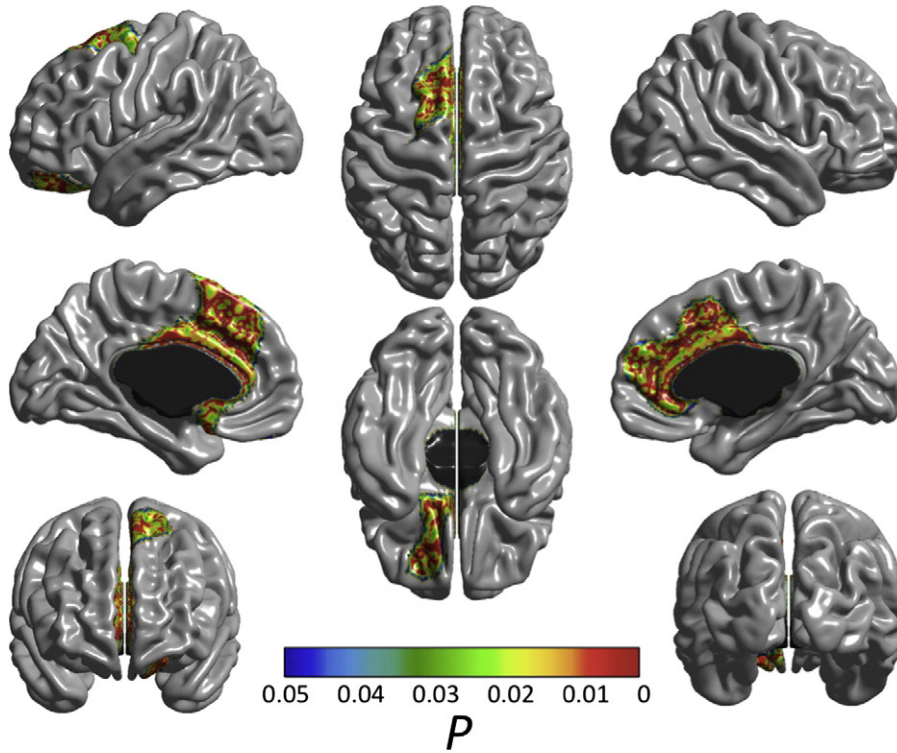
The primary finding of this study was that individual differences in the rate of change in cortical thickness were related to changes in three aspects of IQ, indices of relative general cognitive ability that

summarize how well an individual performs in a cognitive battery with respect to a population-based reference group. More specifically, we showed that i) changes in CTh, and not CSA, were associated with FSIQ, VIQ, and PIQ changes; ii) relevant CTh changes took place in regions that are known to be associated with general cognitive ability; and iii) children and adolescents displaying FSIQ losses displayed the steepest cortical thinning rates, and FSIQ gains were not accompanied, on average, by significant cortical thickening. Taken together, these findings, which were based on a sizeable sample of children and adolescents, underscore the dynamic nature of intelligence–brain relations and, more importantly, support the idea that changes in IQ across development can reflect meaningful general cognitive ability changes and have a neuroanatomical substrate.

Consistency with previous literature on brain–cognition associations

Changes in cognitive ability were significantly associated with changes in CTh in the frontoparietal regions of the left hemisphere, mainly comprising posterior areas of the frontal cortex. Crucially, these cortical regions have previously been related to individual differences in general cognitive ability in cross-sectional studies (Barbey et al., 2012; Jung and Haier, 2007; Karama et al., 2009). Changes in PIQ were associated with changes in the left pre-central gyrus and left posterior superior and inferior frontal cortices, areas that roughly overlapped with regions that correlated with changes in FSIQ. Change in PIQ was additionally associated with changes in CTh in the caudal and rostral supplementary motor areas of the right hemisphere. In contrast, changes in VIQ yielded only trend-level correlations with CTh changes (FWE < 0.1) in the left pre-central gyrus. Post-hoc analyses helped illustrate the nature of the observed associations. These analyses revealed that, on average, participants with substantial gains in FSIQ

Increase in CSA



Decrease in CSA

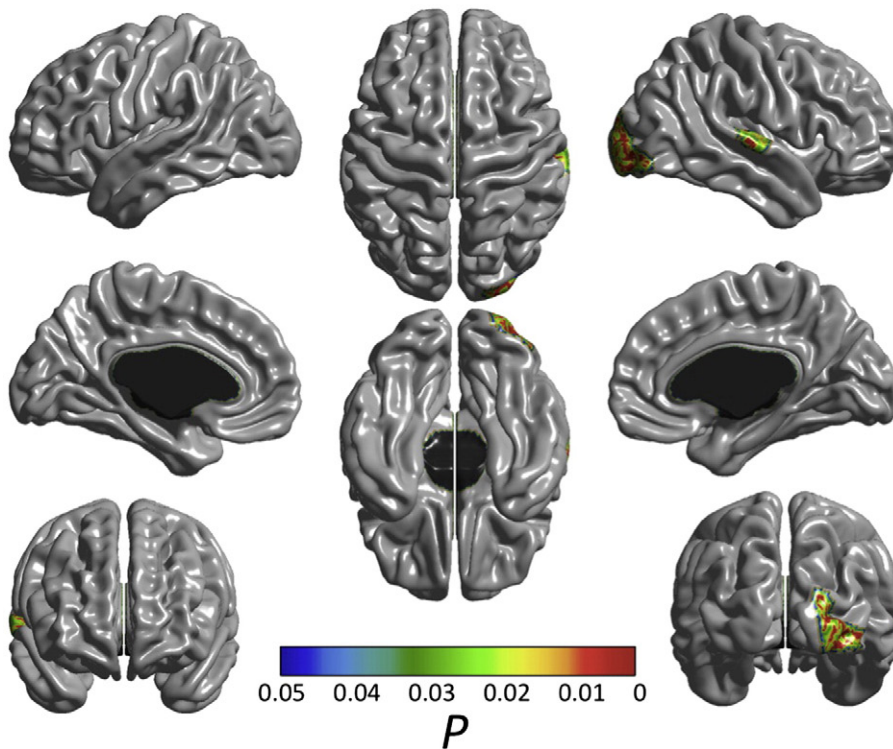


Fig. 3. Significant (FWE-corrected $p < 0.05$) age effect on cortical surface area. Upper image shows regions of cortical surface area decreases while bottom image shows regions of increases. Effects of age at time 1, sex, scanner and inter-scan lapse were controlled.

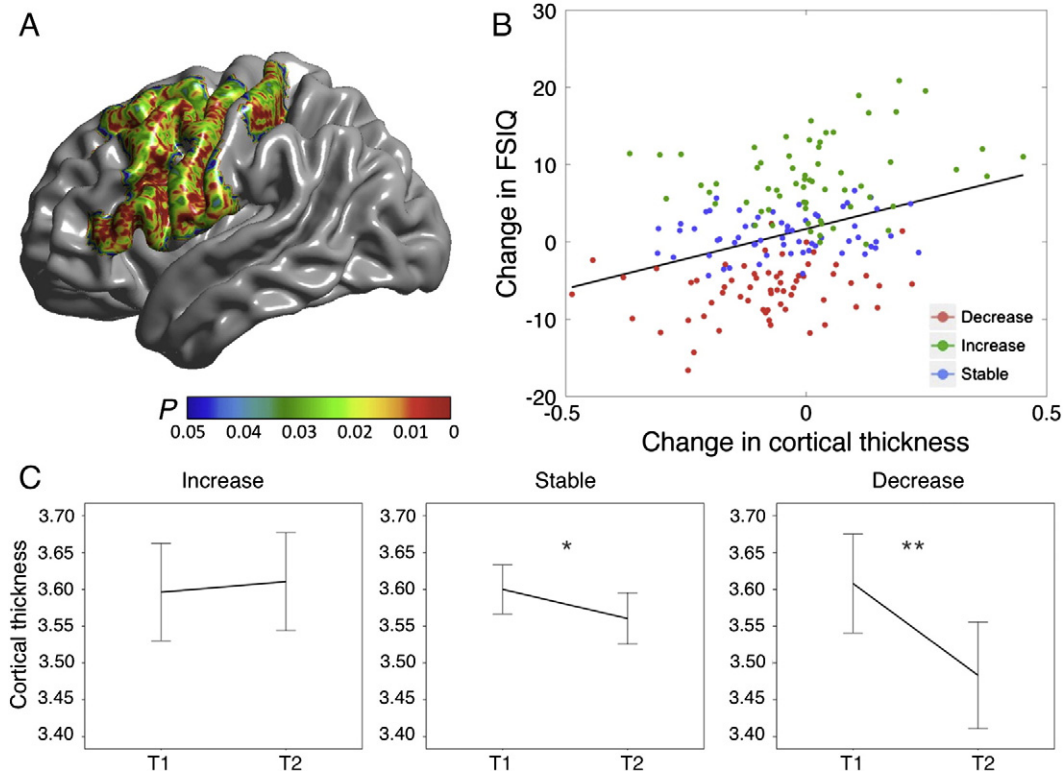


Fig. 4. A. Cortical regions where change in cortical thickness was associated with change in FSIQ (FWE < 0.05). B. Scatter plot for the relation between IQ changes and CTh changes at the peak vertex (inferior pre-central gyrus; $r = 0.33, p < 0.001$). Participants are color-coded based on the magnitudes and directions of their changes in FSIQ scores in relation to the 90% confidence interval around mean change in FSIQ. C. Changes in cortical thickness at the same peak vertex represented in panel B, separately for each group of change in IQ: 'increase' (N = 58), 'no change' (N = 92), and 'decrease' (N = 38). T1 = time 1. T2 = time 2. * $p < 0.005$. ** $p < 0.001$.

scores exhibited no significant changes in cortical thickness, although those with the largest FSIQ gains tended to show increases in cortical thickness, as shown in Fig. 4B. Participants who exhibited no change in FSIQ tended to show modest decreases in cortical thickness, of a magnitude consistent with previous observations of normative developmental change in cortical thickness for the age group under study (Panizzon et al., 2009; Raznahan et al., 2011; Shaw et al., 2008). Finally, those individuals who experienced declines in FSIQ displayed the steepest reductions in cortical thickness. Contrasted with our systematic findings for cortical thickness, we did not find evidence of associations between changes in measures of cognitive ability and changes in cortical surface area. These findings are consistent with reports that developmental changes in surface area are less significant (Østby et al., 2009) and less steep (Raznahan et al., 2011) than those for cortical thickness.

Our results are somewhat consistent with, and also extend, those of Ramsden et al. (2011). Indeed, our strongest region of association with changes in FSIQ, PIQ, and VIQ, was in the left pre-central gyrus; the same region where Ramsden et al. (2011) noted an association with VIQ change. They did not report associations for FSIQ, however, whereas we found a clear pattern of association. Moreover, they observed an association between gray matter density and PIQ in the cerebellum – a structure that is not yet amenable to automated cortical thickness quantification due to its high degree of gyrification. Differences between voxel and surface-based morphometry techniques, as well as other methodological differences (e.g., sample size, cognitive tests used, sample representativeness) are likely partly to account for the observed discrepancies. Importantly, and contrary to Ramsden et al.'s (2011) conclusions, the association between cortical and cognitive changes in our data was found in brain areas that are relevant for individual differences in general intelligence.

The associations we observed in sensorimotor areas deserve further study, although they are consistent with extensive evidence showing that the sensorimotor cortex is involved in abstract reasoning, a main subcomponent of general cognitive ability. Indeed, a recent meta-analysis of 28 fMRI studies on deductive reasoning (Prado et al., 2011) described reliable association with a left-lateralized cortical network which includes, among other regions, the inferior frontal gyrus, middle frontal gyrus, pre-central gyrus, and medial frontal cortex. Activity of the left pre-central gyrus during reasoning tasks has been interpreted as indicative of the relevance of motor and attentional processes to cognitive processing (Acuna et al., 2002). Furthermore, the sensorimotor cortex is part of a broad working memory system that includes the pre-frontal cortex, anterior cingulate cortex and hippocampus (Braver and Cohen, 2000; Cohen and Servan-Schreiber, 1992; Miller and Cohen, 2001; O'Reilly et al., 1999). Along these lines, recent research on the impact of brain lesions on cognition has suggested a left-lateralized frontoparietal network for working memory, with the peak for the

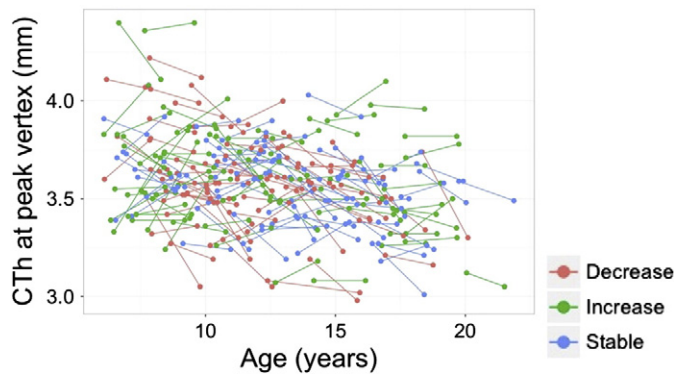


Fig. 5. Longitudinal plots for the intra-individual changes in CTh at the peak vertex for the association between FSIQ changes and CTh changes (see Fig. 4). Participants are color-coded based on the magnitude and direction of their change in FSIQ scores (90% confidence interval).

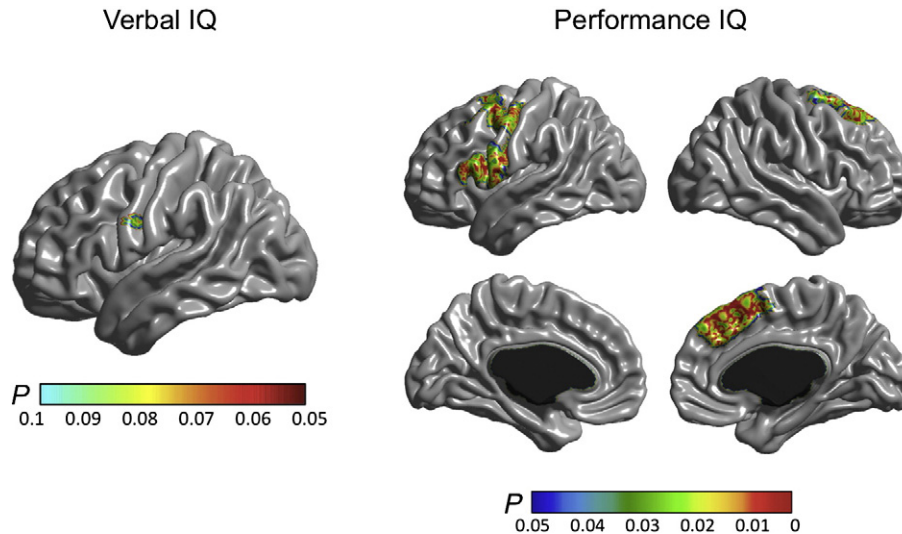


Fig. 6. Correlations between change in CTh and change in verbal IQ (left), and performance IQ (right).

lesion–deficit relationship located in the vicinity of the left paracentral gyri (Gläscher et al., 2010). Importantly, working memory capacity has been proposed as germane to individual differences in reasoning and general cognitive ability (Colom et al., 2003, 2004; Engle et al., 1999; Stauffer et al., 1996). Therefore, one could speculate about developmental changes in working memory capacity, with corollary impacts on IQ. However, this hypothesis remains to be tested.

Finally, the benefits of a reduced rate of cortical thinning across childhood and adolescence have been shown for another cognitive domain by Shaw et al. (2013), who recently reported that children with ADHD whose symptoms persisted into adulthood displayed higher rates of cortical thinning across development when compared to normal controls (bilateral cingulate gyrus, medial prefrontal cortex, and precuneus, as well as right dorsolateral prefrontal cortex), while those that remitted exhibited a slower rate of cortical thinning – and in some cases, even cortical thickening – than normal controls.

Cellular underpinnings of cognitive ability-related changes in cortical thickness

The fact that IQ changes were significantly associated with CTh changes, but not CSA changes, may have interesting implications regarding the microstructural underpinnings of the reported longitudinal fluctuations in IQ. At the cellular level, the number of neurons, the amount of glial and capillary support, and the level of dendritic arborization can account for most of the variability in CTh, whereas CSA is presumably related to the number and spacing of mini-columnar units of cells (Chklovskii et al., 2004; la Fougere et al., 2011; Rakic, 1988; Thompson et al., 2007). This fits well with the fact that IQ changes were related to CTh changes – likely indexing cellular events that are sensitive to postnatal development and experience, but not to CSA changes – which are likely dependent on neurogenesis and neuronal migration, two processes that are almost complete by term gestation (Hill et al., 2010).

Nevertheless, CSA may also index indirect processes by which the distance between cortical mini-columns is increased or decreased, such as the mechanistic pressures exerted by the size and complexity of the dendritic arbors (Hill et al., 2010; Meyer, 1987; Mountcastle, 1997). CSA might also be sensitive to the size of intracortical elements or to the volume of white matter adjacent to a given gyrus or sulcus (Feczko et al., 2009). This would be consistent with the fact that we observed significant longitudinal changes in CSA during childhood and adolescence. With regard to the associations found for CTh changes, there is no evidence of neuronal proliferation in the human cortex

during most of post-natal development, which makes it unlikely that the observed CTh changes are due to changes in the number of cortical neurons (Zatorre et al., 2012). A more plausible alternative is that CTh changes stem from modifications in amount of glial and capillary support, as well as in dendritic arborization (Chklovskii et al., 2004; Sur and Rubenstein, 2005; Thompson et al., 2007). Indeed, there is evidence showing that gliogenesis occurs as a consequence of learning and experience (Dong and Greenough, 2004) and is considered an important candidate mechanism for experience-related changes in gray matter morphology (Zatorre et al., 2012). In addition, animal studies show learning-related increases in number of synapses, glial cells, as well as in cortical capillary density (Anderson et al., 1994, 2002; Black et al., 1990; Isaacs et al., 1992; Kleim et al., 1996). However, it is not clear whether decrements in these microstructural parameters would also account for cortical thinning processes, or whether they may instead underpin cortical thickening only.

On the other hand, cortical thinning in the age range studied here can be partly explained by synaptic pruning (Huttenlocher and Dabholkar, 1997; Paus, 2005; Petanjek et al., 2011). Based on this evidence, we speculate that an excessive loss of neuronal connections (perhaps with associated glia and capillary modifications) might be behind the steeper cortical thinning found in those participants in whom cognitive ability decreased, thus preventing or delaying adequate circuitry specializations relevant for cognition (Hensch, 2004; Knudsen, 2004). This is consistent with cross-sectional studies showing that higher IQ levels are associated with greater numbers of dendrites (Jacobs et al., 1993), and that individuals with very low IQ display reduced dendritic branching compared to the normal population (Huttenlocher, 1991).

Putative underpinnings of the association between changes in cognitive ability and rate of cortical thinning

The reported changes in cognitive ability may reflect individual differences in relative rates of cognitive (and brain) development. That is, some participants may develop earlier or later compared to their peers, causing their age-related rank orders in cognitive ability to shift upward or downward. Such shifts could be transitory or, instead, have long-lasting effects and persist in adulthood. A second possibility, consistent with the hypothesized excess of dendritic and spine elimination suggested above, is that a non-pathological relative decrease in cognitive ability may be partly caused by insufficient educational and social stimulation during a sensitive period (Hensch, 2004; Knudsen, 2004), among other factors known to influence cognitive ability, such as lifestyle, diet and nutrition (Deary et al., 2009). Indeed, previous reports

have suggested that dendritic and spine rearrangement and elimination occurring during childhood and adolescence are likely dependent on social and educational interactions (Petanjek et al., 2008). Moreover, it has been shown that schooling has an effect on IQ (Ceci, 1992; Ceci and Williams, 1997).

Nevertheless, the processes that underlie cognitive development are known to involve complex genetic and experiential interactions (Lenroot and Giedd, 2008). A fundamental question that arises, therefore, is how these complex interactions between genetic and environmental influences contribute to the observed developmental trajectories. Along these lines, van Soelen et al. (2012) recently found that cortical thinning rates in children were under moderate to high genetic influence, and independent genetic factors influenced different cortical areas. This does not necessarily mean, however, that cognitive ability levels and developmental trajectories in general are largely genetically determined via some genetic influence on cortical structure. For example, experimental evidence in both animals and humans suggests that cortical morphology is malleable to experience (Draganski et al., 2004; Haier et al., 2009; Lerch et al., 2011). If the outcome of practice with intellectual skills is genetically influenced and in turn influences CTh development, the genetic influences on such practice will appear over time as genetic influences on CTh even if access to practice with intellectual skills were completely socially dictated. Moreover, the genetic contribution to variance in cognitive ability can vary considerably depending upon the environmental context; for instance, in less advantaged circumstances, environmental factors can play more potent roles, apparently obscuring genetic influences (Turkheimer et al., 2003). Furthermore, shared environmental influences account for substantial variance in cognitive ability during childhood (Haworth et al., 2010), but they decrease with age and are offset by increasing genetic influences – a pattern similar to that observed for cortical thickness development (Lenroot and Giedd, 2008) that could also be explained by gene–environment correlation that passes from passive to active (Johnson, 2010). We thus speculate that environmental (e.g., social and educational) factors may be of relevance, although their interactions with the genetic endowment would obviously be critical for phenotypic alterations in relative cognitive ability.

Limitations and future research

It has long been proposed that MRI methods could yield apparent cortical thinning during adolescence that is partly explained by developmental myelination at the gray–white matter boundary (white matter encroachment; Gogtay and Thompson, 2010; Panizzon et al., 2009; Sowell et al., 2001, 2004; Thompson et al., 2007). Such a process is thought to increase the T1-weighted MRI signal of lower cortical layers, making it more likely for those boundary voxels to be classified as white matter. While such a process likely occurs, it would be unlikely to account for the tendency observed here for cortical thickening in individuals whose FSIQ scores increased. Further, Tamnes et al. (2010) showed, by means of concurrent estimation of developmental trajectories for cortical thickness and white matter volume and integrity, that longitudinal increases in white matter structure did not account for the observed cortical thinning. Therefore, although indirect effects of wiring and myelin proliferation at the lower cortical layers might affect MRI signal and tissue segmentation, in the present case it is more likely that the cognitive changes were related to true change in the microstructure and thickness of the cortical mantle, and not only in surrounding white matter.

A further methodological consideration is that difference scores such as what we used can be to some extent unreliable, due to the compounding of error variance in both time 1 and time 2 measures as well as the tendency for extreme scorers to regress towards the mean. Moreover, our sample was rather restricted in range of cognitive ability, with average FSIQ scores around .8 standard deviations above the population mean at both time points, and standard deviations about 20% smaller

than in the population at large. In general, these problems should act to attenuate the associations in which we were interested. Albeit we addressed this by considering separate groups of participants who likely showed reliable increases in FSIQ, no reliable change, and reliable decreases, it remains to be answered whether the associations observed here, as well as their magnitude, would be amplified in more heterogeneous samples. We showed, on the other hand, that our results were not sensitive to the presence of outliers and the use of different smoothing kernels, which supports the robustness of the findings.

Despite these limitations, this research supports the view that developmental fluctuations in IQ scores are reflected in changes in brain structure. Specifically, here we show, for the first time, that longitudinal general cognitive ability changes were associated with cortical thickness changes in brain structures that are known to be related to individual differences in intelligence in cross-sectional correlational studies. Future research should investigate observed changes in adulthood and include other MRI-based indices that provide information about potential changes in subcortical morphology, white matter integrity and functional connectivity, given that these have been shown to correlate with general cognitive ability in cross-sectional studies (Burgaleta et al., 2013; Chiang et al., 2009; Karama et al., 2009, 2011; Tamnes et al., 2010; Yu et al., 2008). Furthermore, this research could be complemented by studying longitudinal changes in specific cognitive skills, independent of general intelligence (e.g., by studying changes in residual scores obtained after regressing out FSIQ upon VIQ and PIQ). Although we reported results for VIQ and PIQ in an effort to increase comparability with the study of Ramsden et al. (2011), these measures are highly correlated and load strongly on a general factor of intelligence, and thus should not be regarded as proper indices of specific skills. Finally, in order to better understand the underpinnings of general cognitive ability changes, future research on how social, educational, and genetic factors influence changes in intelligence via their impact on brain development is necessary.

Acknowledgments

This project was conducted by the Brain Development Cooperative Group and supported by the National Institute of Child Health and Human Development, the National Institute on Drug Abuse, the National Institute of Mental Health, and the National Institute of Neurological Disorders and Stroke (Contract #s N01-HD02-3343, N01-MH9-0002, and N01-NS-9-2314, -2315, -2316, -2317, -2319 and -2320). Special thanks to the NIH contracting officers for their support. S.K. was supported by a Fellowship from the Fonds de Recherche en Santé du Québec. M.B. was supported by the Spanish Ministry of Education and Science (grant FPU-AP2006) and the postdoctoral “Alianza 4 Universidades” fellowship (A4U-4-2011). We also acknowledge the important contribution and remarkable spirit of John Haselgrove, Ph.D. (deceased).

Conflicts of interest

Authors declare that they have no conflicting financial interests.

References

- Acuna, B.D., Eliassen, J.C., Donoghue, J.P., Sanes, J.N., 2002. Frontal and parietal lobe activation during transitive inference in humans. *Cereb. Cortex* 12, 1312–1321.
- Ad-Dab'bagh, Y., Lyttelton, O., Muehlboeck, J.-S., Lepage, C., Einarson, D., Mok, K., Ivanov, O., Vincent, R.D., Lerch, J., Fombonne, E., Evans, A.C., 2006. The CIVET image-processing environment: a fully automated comprehensive pipeline for anatomical neuroimaging research. In: Corbetta, M. (Ed.), *Proceedings of the 12th Annual Meeting of the Organization for Human Brain Mapping*, Florence, Italy, p. 545.
- Anderson, B.J., Li, X., Alcantara, A.A., Isaacs, K.R., Black, J.E., Greenough, W.T., 1994. Glial hypertrophy is associated with synaptogenesis following motor-skill learning, but not with angiogenesis following exercise. *Glia* 11, 73–80.
- Anderson, B.J., Eckburg, P.B., Relucio, K.L., 2002. Alterations in the thickness of motor cortical subregions after motor-skill learning and exercise. *Learn. Mem. (Cold Spring Harbor, NY)* 9, 1–9.

- Barbey, A.K., Colom, R., Solomon, J., Krueger, F., Forbes, C., Grafman, J., 2012. An integrative architecture for general intelligence and executive function revealed by lesion mapping. *Brain* 135, 1154–1164.
- Black, J.E., Isaacs, K.R., Anderson, B.J., Alcantara, A.A., Greenough, W.T., 1990. Learning causes synaptogenesis, whereas motor activity causes angiogenesis, in cerebellar cortex of adult rats. *Proc. Natl. Acad. Sci. U. S. A.* 87, 5568–5572.
- Brain Development Cooperative Group, 2012. Total and regional brain volumes in a population-based normative sample from 4 to 18 years: the NIH MRI Study of Normal Brain Development. *Cereb. Cortex* 22, 1–12.
- Braver, T.S., Cohen, J., 2000. On the control of control: the role of dopamine in regulating prefrontal function and working memory. In: Monsell, S., Driver, J. (Eds.), *Attention and Performance XVIII: Control of Cognitive Processing*. MIT Press, Cambridge, MA.
- Burgaleta, M., MacDonald, P.A., Martínez, K., Román, F.J., Álvarez-Línera, J., Ramos González, A., Karama, S., Colom, R., 2013. Subcortical regional morphology correlates with fluid and spatial intelligence. *Hum. Brain Mapp.* <http://dx.doi.org/10.1002/hbm.22305> (Epub ahead of print).
- Ceci, S., 1992. Schooling and intelligence. *Psychol. Sci. Agenda* 5, 7–9.
- Ceci, S., Williams, W., 1997. Schooling, intelligence, and income. *Am. Psychol.* 52 (10), 1051–1058.
- Chiang, M., Barysheva, M., Shattuck, D.W., Lee, A.D., Madsen, S.K., Avedissian, C., Klunder, A.D., Toga, A.W., McMahon, K.L., de Zubicaray, G.L., Wright, M.J., Srivastava, A., Balov, N., Thompson, P.M., 2009. Genetics of brain fiber architecture and intellectual performance. *J. Neurosci.* 29, 2212–2224.
- Chklovskii, D.B., Mel, B.W., Svoboda, K., 2004. Cortical rewiring and information storage. *Nature* 431, 782–788.
- Cohen, J.D., Servan-Schreiber, D., 1992. Context, cortex, and dopamine: a connectionist approach to behavior and biology in schizophrenia. *Psychol. Rev.* 99, 45–77.
- Colom, R., Flores-Mendoza, C., Rebollo, I., 2003. WM and intelligence. *Pers. Individ. Differ.* 34.
- Colom, R., Rebollo, I., Palacios, A., Juan-Espinoso, M., Kyllonen, P., 2004. WM is (almost) perfectly predicted by g. *Intelligence* 32, 277–296.
- Colom, R., Haier, R.J., Head, K., Álvarez-Línera, J., Quiroga, M.A., Shih, P.C., Jung, R.E., 2009. Gray matter correlates of fluid, crystallized, and spatial intelligence: testing the P-FIT model. *Intelligence* 37, 124–135.
- Deary, I.J., Whalley, L.J., Lemmon, H., Crawford, J.R., Starr, J.M., 2000. The stability of individual differences in mental ability from childhood to old age: follow-up of the 1932 Scottish Mental Survey. *Intelligence* 28, 49–55.
- Deary, I.J., Corley, J., Gow, A.J., Harris, S.E., Houlihan, L.M., Marioni, R.E., Penke, L., Rafnsson, S.B., Starr, J.M., 2009. Age-associated cognitive decline. *Br. Med. Bull.* 92 (1), 135–152.
- Dong, W.K., Greenough, W.T., 2004. Plasticity of nonneuronal brain tissue: roles in developmental disorders. *Ment. Retard. Dev. Disabil. Res. Rev.* 10, 85–90.
- Draganski, B., Gaser, C., Busch, V., Schuierer, G., Bogdahn, U., May, A., 2004. Neuroplasticity: changes in grey matter induced by training. *Nature* 427, 311–312.
- Engle, R.W., Tuholski, S.W., Laughlin, J.E., Conway, A.R., 1999. Working memory, short-term memory, and general fluid intelligence: a latent-variable approach. *J. Exp. Psychol. Gen.* 128, 309–331.
- Evans, A.C., Brain Development Cooperative Group, 2006. The NIH MRI study of normal brain development. *Neuroimage* 30, 184–202.
- Feczko, E., Augustinack, J.C., Fischl, B., Dickerson, B.C., 2009. An MRI-based method for measuring volume, thickness and surface area of entorhinal, perirhinal, and posterior parahippocampal cortex. *Neurobiol. Aging* 30, 420–431.
- Flynn, J.R., 2007. *What is Intelligence?* Cambridge University Press, Cambridge.
- Gläscher, J., Rudrauf, D., Colom, R., Paul, L.K., Tranel, D., Damasio, H., Adolphs, R., 2010. Distributed neural system for general intelligence revealed by lesion mapping. *Proc. Natl. Acad. Sci. U. S. A.* 107, 4705–4709.
- Gogtay, N., Thompson, P.M., 2010. Mapping gray matter development: implications for typical development and vulnerability to psychopathology. *Brain Cogn.* 72, 6–15.
- Haier, R.J., Siegel Jr., B., Nuechterlein, K.H., Hazlett, E., Wu, J.C., Paek, J., Browning, H.L., Buchsbaum, M.S., 1988. Cortical glucose metabolic rate correlates of abstract reasoning and attention studied with positron emission tomography. *Intelligence* 12, 199–210.
- Haier, R.J., Karama, S., Leyba, L., Jung, R.E., 2009. MRI assessment of cortical thickness and functional activity changes in adolescent girls following three months of practice on a visual-spatial task. *BMC Res. Notes* 2, 174.
- Haworth, C.M., Wright, M.J., Luciano, M., Martin, N.G., de Geus, E.J., van Beijsterveldt, C.E., Bartels, M., Posthuma, D., Boomsma, D.I., Davis, O.S., Kovas, Y., Corley, R.P., Defries, J.C., Hewitt, J.K., Olson, R.K., Rhea, S.A., Wadsworth, S.J., Iacono, W.G., McGue, M., Thompson, L.A., Hart, S.A., Petrill, S.A., Lubinski, D., Plomin, R., 2010. The heritability of general cognitive ability increases linearly from childhood to young adulthood. *Mol. Psychiatry* 15 (11), 1112–1120. <http://dx.doi.org/10.1038/mp.2009.55>.
- Hensch, T.K., 2004. Critical period regulation. *Annu. Rev. Neurosci.* 27, 549–579.
- Hill, J., Inder, T., Neil, J., Dierker, D., Harwell, J., Van Essen, D., 2010. Similar patterns of cortical expansion during human development and evolution. *Proc. Natl. Acad. Sci. U. S. A.* 12, 2010. <http://dx.doi.org/10.1073/pnas.1001229107> (published ahead of print July 12, 2010).
- Huttenlocher, P.R., 1991. Dendritic and synaptic pathology in mental retardation. *Pediatr. Neurol.* 7, 79–85.
- Huttenlocher, P.R., Dabholkar, A.S., 1997. Regional differences in synaptogenesis in human cerebral cortex. *J. Comp. Neurol.* 387, 167–178.
- Isaacs, K.R., Anderson, B.J., Alcantara, A.A., Black, J.E., Greenough, W.T., 1992. Exercise and the brain: angiogenesis in the adult rat cerebellum after vigorous physical activity and motor skill learning. *J. Cereb. Blood Flow Metab.* 12, 110–119.
- Jacobs, B., Schall, M., Scheibel, A.B., 1993. A quantitative dendritic analysis of Wernicke's area in humans. II. Gender, hemispheric, and environmental factors. *J. Comp. Neurol.* 327, 97–111.
- Johnson, W., 2010. Understanding the genetics of intelligence: can height help? Can corn oil? *Curr. Dir. Psychol. Sci.* 19, 177–182.
- Jokela, M., Batty, G.D., Deary, I.J., Gale, C.R., Kivimaki, M., 2009. Low childhood IQ and early adult mortality: the role of explanatory factors in the 1958 British Birth Cohort. *Pediatrics* 124, e380–e388.
- Jung, R.E., Haier, R.J., 2007. The Parieto-Frontal Integration Theory (P-FIT) of intelligence: converging neuroimaging evidence. *Behav. Brain Sci.* 30, 135–154.
- Karama, S., Ad-Dab'bagh, Y., Haier, R.J., Deary, I.J., Lyttelton, O.C., Lepage, C., Evans, A.C., 2009. Positive association between cognitive ability and cortical thickness in a representative US sample of healthy 6 to 18 year-olds. *Intelligence* 37, 145–155.
- Karama, S., Colom, R., Johnson, W., Deary, I.J., Haier, R.J., Waber, D.P., Lepage, C., Ganjavi, H., Jung, R., Evans, A.C., The Brain Development Cooperative Group, 2011. Cortical thickness correlates of specific cognitive performance accounted for by the general factor of intelligence in health children aged 6 to 18. *Neuroimage* 55 (4), 1–11.
- Kim, J.S., Singh, V., Lee, J.K., Lerch, J., Ad-Dab'bagh, Y., MacDonald, D., Lee, J.M., Kim, S.I., Evans, A.C., 2005. Automated 3-D extraction and evaluation of the inner and outer cortical surfaces using a Laplacian map and partial volume effect classification. *Neuroimage* 27, 210–221.
- Kleim, J.A., Lussnig, E., Schwarz, E.R., Comery, T.A., Greenough, W.T., 1996. Synaptogenesis and Fos expression in the motor cortex of the adult rat after motor skill learning. *J. Neurosci.* 16, 4529–4535.
- Knudsen, E.I., 2004. Sensitive periods in the development of the brain and behavior. *J. Cogn. Neurosci.* 16, 1412–1425.
- la Fougère, C., Grant, S., Kostikov, A., Schirrmacher, R., Gravel, P., Schipper, H.M., Reader, A., Evans, A., Thiel, A., 2011. Where in-vivo imaging meets cytoarchitectonics: the relationship between cortical thickness and neuronal density measured with high-resolution [18F]flumazenil-PET. *Neuroimage* 56, 951–960.
- Lenroot, R.K., Giedd, J.N., 2008. The changing impact of genes and environment on brain development during childhood and adolescence: Initial findings from a neuroimaging study of pediatric twins. *Dev. Psychopathol.* 20 (4), 1161–1175.
- Lerch, J.P., Evans, A.C., 2005. Cortical thickness analysis examined through power analysis and a population simulation. *Neuroimage* 24, 163–173.
- Lerch, J.P., Yiu, A.P., Martínez-Canabal, A., Pekar, T., Bohbot, V.D., Frankland, P.W., Henkelman, R.M., Josselyn, S.A., Sled, J.G., 2011. Maze training in mice induces MRI-detectable brain shape changes specific to the type of learning. *Neuroimage* 54, 2086–2095.
- Lövdén, M., Bodammer, N.C., Kühne, S., Kaufmann, J., Schütze, H., Tempelmann, C., Heinze, H.J., Düzel, E., Schmiech, F., Lindenberger, U., 2010. Experience-dependent plasticity of white-matter microstructure extends into old age. *Neuropsychologia* 48, 3878–3883.
- Lyttelton, O.C., Karama, S., Ad-Dab'bagh, Y., Zatorre, R.J., Carbonell, F., Worsley, K., Evans, A.C., 2009. Positional and surface area asymmetry of the human cerebral cortex. *Neuroimage* 46, 895–903.
- MacDonald, D., Kabani, N., Avis, D., Evans, A.C., 2000. Automated 3-D extraction of inner and outer surfaces of cerebral cortex from MRI. *Neuroimage* 12, 340–356.
- Mackey, A.P., Whitaker, K.J., Bunge, S.A., 2012. Experience-dependent plasticity in white matter microstructure: reasoning training alters structural connectivity. *Front. Neuroanat.* 6, 32. <http://dx.doi.org/10.3389/fnana.2012.00032>.
- Mazziotta, J.C., Toga, A.W., Evans, A., Fox, P., Lancaster, J., 1995. A probabilistic atlas of the human brain: theory and rationale for its development. The International Consortium for Brain Mapping (ICBM). *Neuroimage* 2, 89–101.
- McArdle, J.J., Ferrer-Caja, E., Hamagami, F., Woodcock, R.W., 2002. Comparative longitudinal structural analyses of the growth and decline of multiple intellectual abilities over the life span. *Dev. Psychol.* 38 (1), 115–142.
- Meyer, G., 1987. Forms and spatial arrangement of neurons in the primary motor cortex of man. *J. Comp. Neurol.* 262, 402–428.
- Miller, E.K., Cohen, J.D., 2001. An integrative theory of prefrontal cortex function. *Annu. Rev. Neurosci.* 24, 167–202.
- Mountcastle, V.B., 1997. The columnar organization of the neocortex. *Brain* 120, 701–722.
- Neubauer, A.C., Fink, A., 2009. Intelligence and neural efficiency: Measures of brain activation versus measures of functional connectivity in the brain. *Intelligence* 37, 223–229.
- Nguyen, T.V., McCracken, J., Ducharme, S., Botteron, K.N., Mahabir, M., Johnson, W., Israel, M., Evans, A.C., Karama, S., 2013. Testosterone-related cortical maturation across childhood and adolescence. *Cereb. Cortex* 23 (6), 1424–1432.
- Nichols, T.E., Holmes, A.P., 2002. Nonparametric permutation tests for functional neuroimaging: a primer with examples. *Hum. Brain Mapp.* 15, 1–25.
- O'Reilly, R.C., Braver, T.S., Cohen, J.D., 1999. A biologically-based computational model of working memory. In: Miyake, A., Shah, P. (Eds.), *Models of Working Memory: Mechanisms of Active Maintenance and Executive Control*. Cambridge University Press, New York, NY.
- Østby, Y., Tamnes, C.K., Fjell, A.M., Westlye, L.T., Due-Tønnessen, P., Walhovd, K.B., 2009. Heterogeneity in subcortical brain development: a structural magnetic resonance imaging study of brain maturation from 8 to 30 years. *J. Neurosci.* 29, 11772–11782.
- Panizzon, M.S., Fennema-Notestine, C., Eyler, L.T., Jernigan, T.L., Prom-Wormley, E., Neale, M., Jacobson, K., Lyons, M.J., Grant, M.D., Franz, C.E., Xian, H., Tsuang, M., Fischl, B., Seidman, L., Dale, A., Kremen, W.S., 2009. Distinct genetic influences on cortical surface area and cortical thickness. *Cereb. Cortex* 19, 2728–2735.
- Paus, T., 2005. Mapping brain maturation and cognitive development during adolescence. *Trends Cogn. Sci.* 9, 60–68.
- Petanjek, Z., Judas, M., Kostovic, I., Uylings, H.B.M., 2008. Lifespan alterations of basal dendritic trees of pyramidal neurons in the human prefrontal cortex: a layer-specific pattern. *Cereb. Cortex* 18, 915–929.
- Petanjek, Z., Judas, M., Simic, G., Rasin, M.R., Uylings, H.B.M., Rakic, P., Kostovic, I., 2011. Extraordinary neonoty of synaptic spines in the human prefrontal cortex. *PNAS* 108 (32), 13281–13286.
- Prado, J., Chadha, A., Booth, J.R., 2011. The brain network for deductive reasoning: a quantitative meta-analysis of 28 neuroimaging studies. *J. Cogn. Neurosci.* 23, 3483–3497.
- Rakic, P., 1988. Specification of cerebral cortical areas. *Science* 241, 170–176.

- Ramsden, S., Richardson, F.M., Josse, G., Thomas, M.S., Ellis, C., Shakeshaft, C., Seghier, M.L., Price, C.J., 2011. Verbal and non-verbal intelligence changes in the teenage brain. *Nature* 479, 113–116.
- Raznahan, A., Shaw, P., Lalonde, F., Stockman, M., Wallace, G.L., Greenstein, D., Clasen, L., Gogtay, N., Giedd, J.N., 2011. How does your cortex grow? *J. Neurosci.* 31, 7174–7177.
- Shaw, P., Greenstein, D., Lerch, J., Clasen, L., Lenroot, R., Gogtay, N., Evans, A., Rapoport, J., Giedd, J., 2006. Intellectual ability and cortical development in children and adolescents. *Nature* 440, 676–679.
- Shaw, P., Kabani, N.J., Lerch, J.P., Eckstrand, K., Lenroot, R., Gogtay, N., Greenstein, D., Clasen, L., Evans, A., Rapoport, J.L., Giedd, J.N., Wise, S.P., 2008. Neurodevelopmental trajectories of the human cerebral cortex. *J. Neurosci.* 28 (14), 3586–3594.
- Shaw, P., Malek, M., Watson, B., Greenstein, D., de Rossi, P., Sharp, W., 2013. Trajectories of cerebral cortical development in childhood and adolescence and adult attention-deficit/hyperactivity disorder. *Biol. Psychiatry*. <http://dx.doi.org/10.1016/j.biopsych.2013.04.007> (Epub ahead of print).
- Smith, S.M., Nichols, T.E., 2009. Threshold-free cluster enhancement: addressing problems of smoothing, threshold dependence and localization in cluster inference. *Neuroimage* 44, 83–98.
- Sowell, E.R., Thompson, P.M., Tessner, K.D., Toga, A.W., 2001. Mapping continued brain growth and gray matter density reduction in dorsal frontal cortex: inverse relationships during postadolescent brain maturation. *J. Neurosci.* 21, 8819–8829.
- Sowell, E.R., Thompson, P.M., Leonard, C.M., Welcome, S.E., Kan, E., Toga, A.W., 2004. Longitudinal mapping of cortical thickness and brain growth in normal children. *J. Neurosci.* 24, 8223–8231.
- Stauffer, J.M., Ree, M.J., Caretta, T.R., 1996. Cognitive components tests are not much more than g: an extension of Kyllonen's analysis. *J. Gen. Psychol.* 123, 193–205.
- Sur, M., Rubenstein, J.L., 2005. Patterning and plasticity of the cerebral cortex. *Science* 310, 805–810.
- Takeuchi, H., Sekiguchi, A., Taki, Y., Yokoyama, S., Yomogida, Y., Komuro, N., Yamanouchi, T., Suzuki, S., Kawashima, R., 2010. Training of working memory impacts structural connectivity. *J. Neurosci.* 30, 3297–3303.
- Tamnes, C.K., Østby, Y., Walhovd, K.B., Westlye, L.T., Due-Tønnessen, P., Fjell, A.M., 2010. Intellectual abilities and white matter microstructure in development: a diffusion tensor imaging study. *Hum. Brain Mapp.* 31, 1609–1625.
- Thompson, P.M., Hayashi, K.M., Dutton, R.A., Chiang, M.C., Leow, A.D., Sowell, E.R., De Zubicaray, G., Becker, J.T., Lopez, O.L., Aizenstein, H.J., Toga, A.W., 2007. Tracking Alzheimer's disease. *Ann. N. Y. Acad. Sci.* 1097, 183–214.
- Turkheimer, E., Haley, A., Waldron, M., D'Onofrio, B., Gottesman, I.I., 2003. Socioeconomic status modifies heritability of IQ in young children. *Psychol. Sci.* 14, 623–628.
- van den Heuvel, M.P., Stam, C.J., Kahn, R.S., Pol, H., 2009. Efficiency of functional brain networks and intellectual performance. *J. Neurosci.* 29, 7619–7624.
- van Soelen, I.L., Brouwer, R.M., van Baal, G.C., Schnack, H.G., Peper, J.S., Collins, D.L., Evans, A.C., Kahn, R.S., Boomsma, D.I., Hulshoff Pol, H.E., 2012. Genetic influences on thinning of the cerebral cortex during development. *Neuroimage* 59, 3871–3880.
- Waber, D., De Moor, C., Forbes, P., Alml, C., Botteron, K., Leonard, G., Milovan, D., Paus, T., Rumsey, J., BDC Group, 2007. The NIH MRI study of normal brain development: performance of a population based sample of healthy children aged 6 to 18 years on a neuropsychological battery. *J. Int. Neuropsychol. Soc.* 13, 729–746.
- Waber, D.P., Forbes, P.W., Alml, C.R., Blood, E.A., 2012. Four-year longitudinal performance of a population-based sample of healthy children on a neuropsychological battery: the NIH MRI study of normal brain development. *J. Int. Neuropsychol. Soc.* 18, 179–190.
- Wechsler, D., 1999. Wechsler Abbreviated Scale of Intelligence. Harcourt Brace and Company, San Antonio.
- Whalley, L.J., Deary, I.J., 2001. Longitudinal cohort study of childhood IQ and survival up to age 76. *BMJ* 322, 819.
- Yu, C., Li, J., Liu, Y., Qin, W., Li, Y., Shu, N., Jiang, T., Li, K., 2008. White matter tract integrity and intelligence in patients with mental retardation and healthy adults. *Neuroimage* 40, 1533–1541.
- Zatorre, R.J., Fields, R.D., Johansen-Berg, H., 2012. Plasticity in gray and white: neuroimaging changes in brain structure during learning. *Nat. Neurosci.* 15 (4), 528–536.